

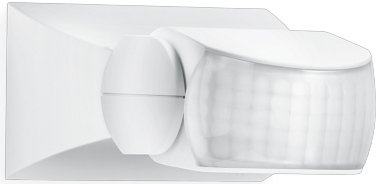
Motion detector





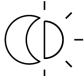



# IS 1

white

EAN 4007841 600310

Article number 600310



-  infrared sensor  
120°
-  max. 10 m
- 500 W  
500 W max.  
(LED-ready)
-  IP54
-  Sensor 180° ver.,  
30° hor.
-  2 - 2000 lux
-  8 sec - 35 min
-  Ideal 2 m
-  energy saving
- 3 years  
manufacturer's  
warranty  
steinel.de/garantie3y

## Function description

Targeted detection and attractive price. Infrared motion detector IS 1, for indoors and out, ideal for targeted coverage of small areas, 120° angle of coverage, reach up to 10 m, selectable time and twilight threshold, sensor turns through 30° and tilts through 180° for exact adjustment of the detection zone.

# IS 1

white

EAN 4007841 600310

Article number 600310

## Technical specifications

Type	Motion detectors	Fluorescent lamps, electronic ballast	430 W
Dimensions (L x W x H)	120 x 80 x 50 mm	Fluorescent lamps, uncorrected	500 VA
Mains power supply	230 – 240 V / 50 Hz	Fluorescent lamps, series-corrected	500 VA
Sensor Technology	passive infrared	Fluorescent lamps, parallel-corrected	500 VA
Application, place	Indoors, Outdoors	Switching output 1, low-voltage halogen lamps	500 VA
Installation site	wall, ceiling	LED lamps	16 W
Installation	Surface wiring	LED lamps > 2 W	64 W
Mounting height	1,80 – 3,00 m	LED lamps > 8 W	64 W
Reach, radial	r = 3 m (9 m <sup>2</sup> )	Capacitive load in µF	88 µF
Reach, tangential	r = 10 m (105 m <sup>2</sup> )	Constant-lighting control	No
Detection angle	120 °	Basic light level function	No
Angle of aperture	40 °	Settings via	Potentiometers
Switching zones	260 switching zones	With remote control	No
Optimum mounting height	2 m	Interconnection	Yes
Mechanical scalability	No	Type of interconnection	Master/master
Sneak-by guard	No	IP-rating	IP54
Capability of masking out individual segments	Yes	Material	Plastic
Electronic scalability	No	Ambient temperature	-20 – 50 °C
Twilight setting TEACH	No	Application, room	outdoors, front door, all round the building, terrace / balcony, courtyard & driveway
Twilight setting	2 – 2000 lx	Colour	white
Time setting	8 s – 35 Min.	Colour, RAL	9001
Output	500 W	Manufacturer's Warranty	3 years
Switching output 1, resistive	500 W	Version	white
Switching output 1, number of LEDs / fluorescent lamps	4 pcs.	PU1, EAN	4007841600310

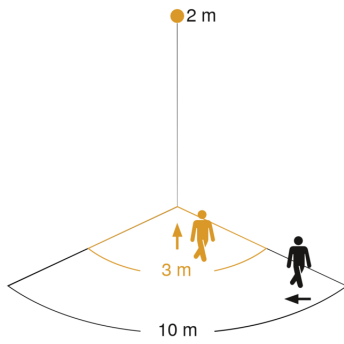
Motion detector

# IS 1

white  
EAN 4007841 600310  
Article number 600310

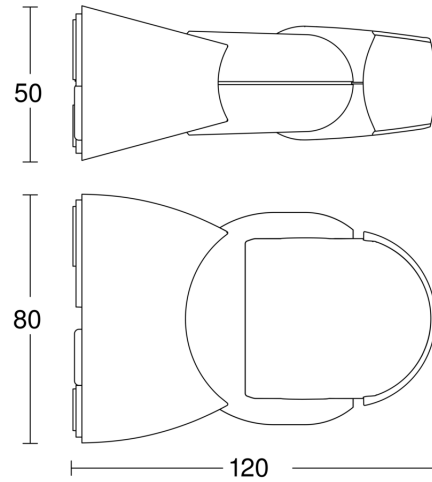


### Detection Zone

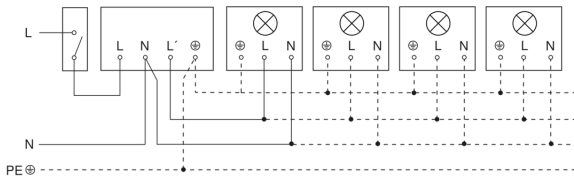


Mögliche Montagehöhe: 1,80 m – 3,00 m  
Orange: radial  
Schwarz: tangential

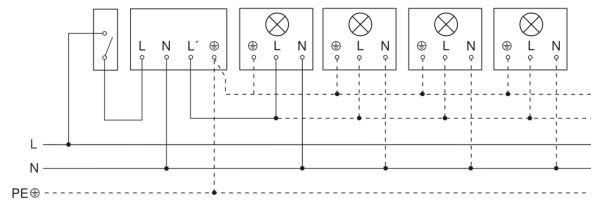
### Dimension Drawing



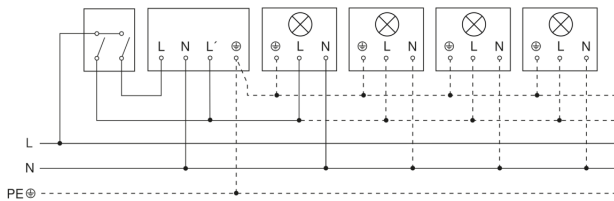
### Light without neutral conductor



### Light with neutral conductor



### Connection using two-circuit switch for manual and automatic operation



### Connection via a two-way switch for manual override and automatic operation

