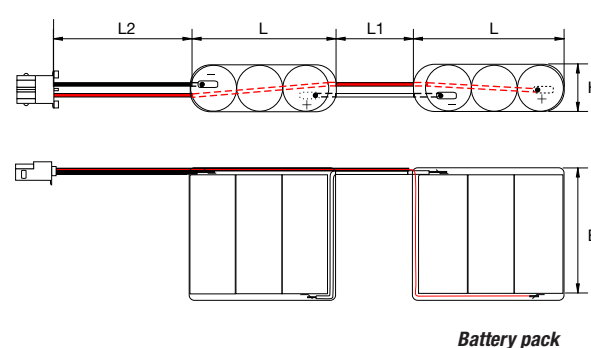
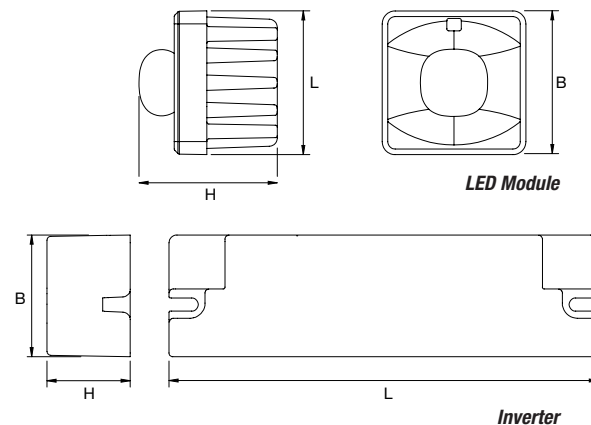




GENERAL FEATURES

- Powers** 1,5 W
- Version** non-maintained, emergency operation inhibition (Rest Mode)
- Compliance** EN 60598-1, EN 61347-2-7, EN 60598-2-22, EN 61347-2-13, UNI 11222
- IP rating** depending on fixture in which is installed
- Emergency duration** 1h, 3h
- Installation** T5 and T8 fixtures
- Housing** graphite doped polyamide
- Optic** high transparency polycarbonate lenses
- Control System** none



	Power W	L	• Dimensions (mm) • L1 L2 B	H	Light source
LED Module	1,5	36	36	28	1 LED
Inverter	-	114	32	22	-
Battery pack	-	40	70 80	50	4,5

Accessories

supplied

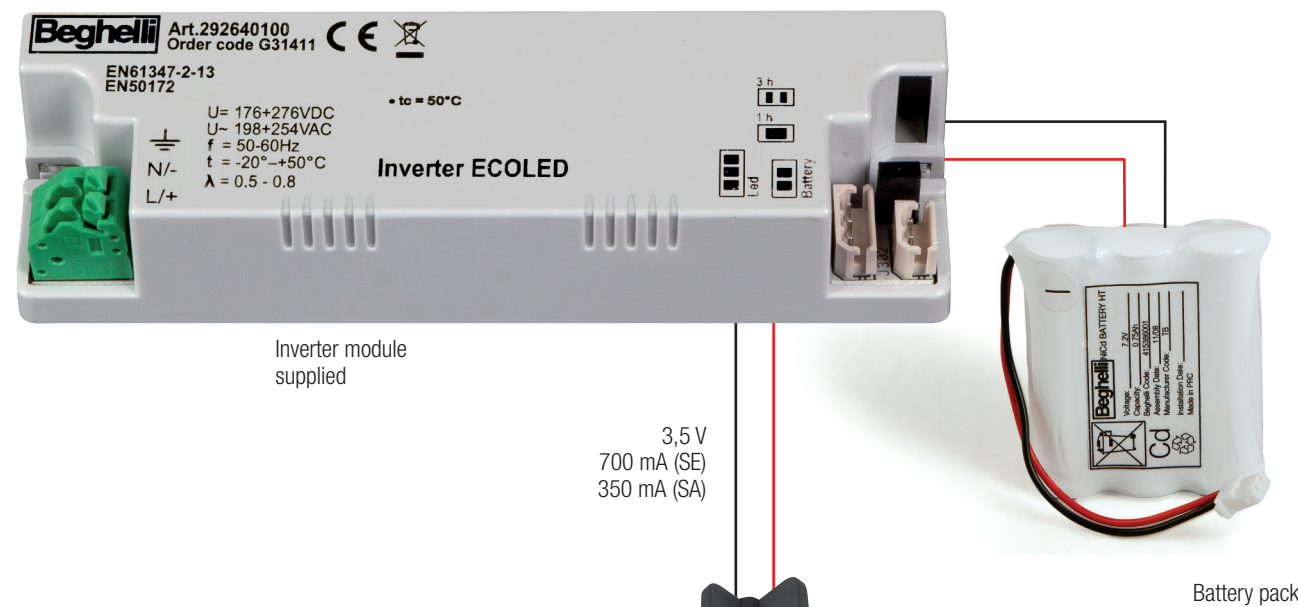
Part number	Description
-	3 lenses: LUNGA, LARGA, ALTA
-	2 mounting clips for installation on T8 and T5 tubes

W	part number	Description	Version	Emergency duration	Battery pack	max power absorption	Weight kg	package
1,5	19350	MODULO ECOLED SE 1N RM	SE	1h	NiCd 3.6V 0.75Ah	1	0,2	6
1,5	19351	MODULO ECOLED SE 3N RM	SE	3h	NiCd 3.6V 0.75Ah	1	0,2	6

EcoLED Module

Auxiliary device for high performances emergency lighting. Module, battery pack and inverter can be easily installed in most common lighting fixtures. Kit supplied with three high transparency polycarbonate lenses, symmetric, asymmetric and high ceiling, to achieve different lighted area dimensions and allows installation from 3 to 7 meters height. The LED module is equipped with clips for installation on T5 and T8 tubes. The high efficiency LED is equipped with graphite doped polyamide heatsink.

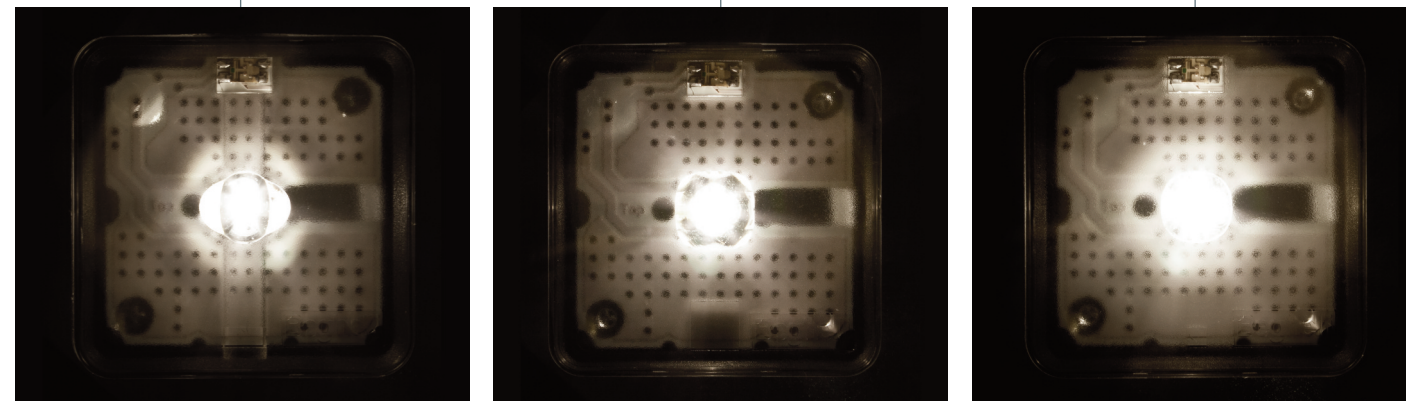
One fixture for many applications



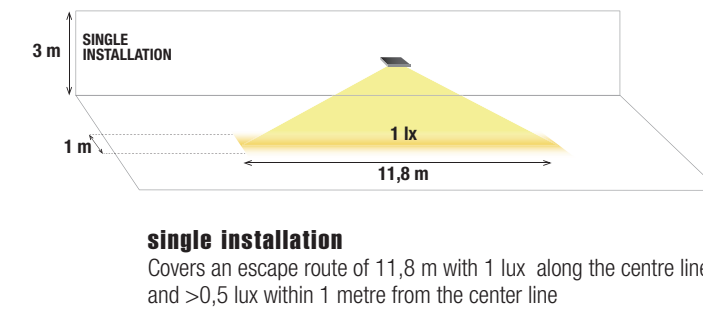
Lungaluce Lens
installed at 3m height covers an escape route of 11,8m granting 1 lux in the middle and >0,5 within 1m

Largaluce Lens
installed at 3m height covers an area of 8,1x8,1m at 0,5 lux

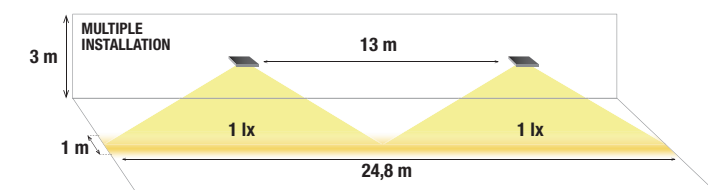
Altaluce Lens
installed at 7m height covers an area of 9,3x9,3m at 0,5 lux

Lighting performances on floor
according to UNI EN 1838

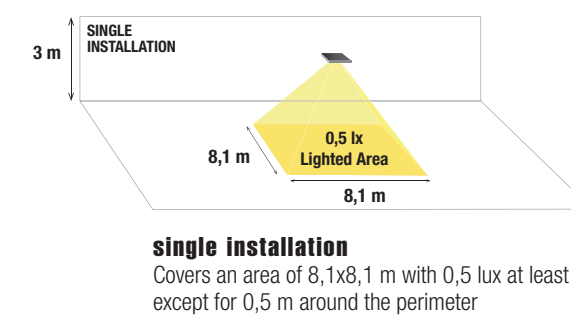
Lungaluce Lens - 3m installation height



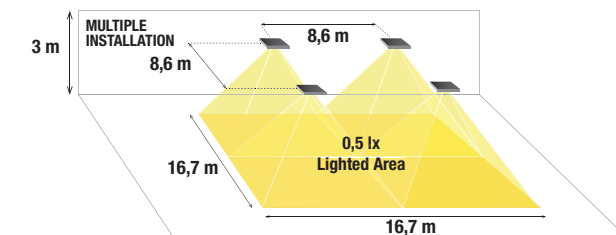
Multiple installation, 13m distance between fittings
Centre distance of 13 m between luminaires covers an escape route of 24,8 m with 1 lux along the centre line and > 0,5 lux within 1 m from the centre line



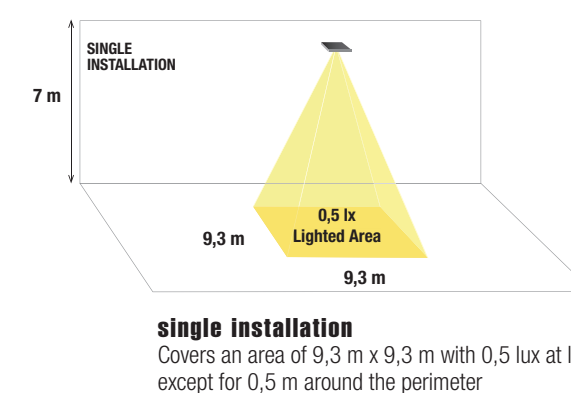
Largaluce Lens - 3m installation height



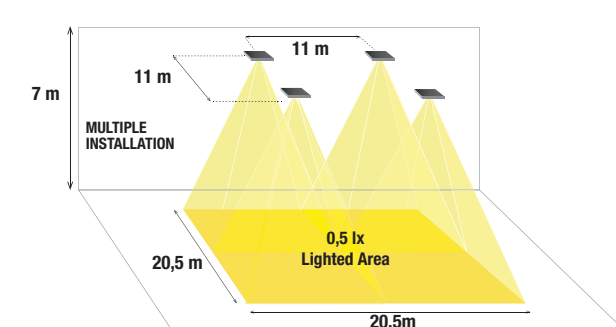
Multiple installation, 8,6m distance between fittings
Centre distances of 8,6 m cover an area of 16,7 m x 16,7 m at least 0,5 lux except for 0,5 m around the perimeter.



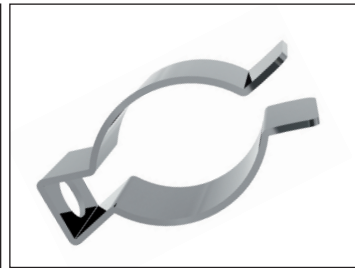
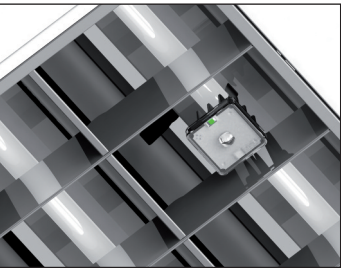
Altaluce Lens - 7m installation height



Multiple installation, 11m distance between fittings
Centre distance of 11 m covers an area of 20,5 m x 20,5 m at least 0,5 lux except for 0,5 m around the perimeter.



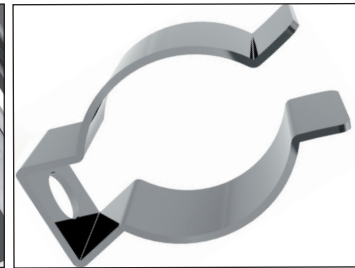
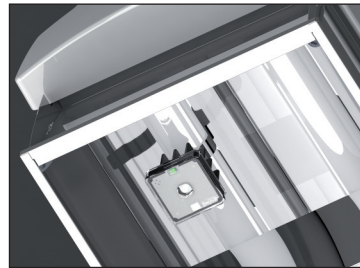
INSTALLATION IN T5 TUBES FIXTURE



- Steel clips

supplied

INSTALLATION IN T8 TUBES FIXTURE



- Steel clips

supplied

SUPPLIED LENSES



- Lungaluce

supplied



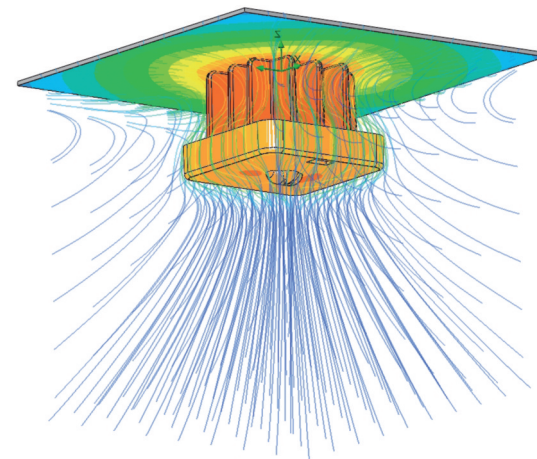
- Largaluce

supplied



- Altaluce

supplied



Thermo-fluid-dynamic analysis: calculated heat dissipation

To grant long lifespan and high performances of the LED light source, a new technology which simulates heat diffusion into the fixture has been used: the thermo-fluid-dynamic analysis allows to estimate the operating temperature of the components to design the heat dissipation system.

LENS	fittings	Covered Area
LUNGALUCE 3m	1	Covers an escape route of 11,8 m with 1 lux along the centre line and >0,5 lux within 1 metre from the center line
	2	Centre distance of 13 m between luminaires covers an escape route of 24,8 m with 1 lux along the centre line and > 0,5 lux within 1 m from the centre line
LARGALUCE 3m	1	Covers an area of 11,3x11,3 m with 0,5 lux at least except for 0,5 m around the perimeter
	4	Centre distances of 8,6 m cover an area of 16,7 m x 16,7 m at least 0,5 lux except for 0,5 m around the perimeter.
ALTALUCE 7m	1	Covers an area of 9,3 m x 9,3 m with 0,5 lux at least except for 0,5 m around the perimeter
	4	Centre distance of 11 m covers an area of 20,5 m x 20,5 m at least 0,5 lux except for 0,5 m around the perimeter.

Inverter ECOLED

Professional emergency lighting fixture

VERSATILITY OF USE
Three lenses supplied
to customize
the light beam

STANDARD COMPLIANCE
doesn't affect features
of the luminaire
in which is installed

EASY INSTALLATION
supplied Mounting clips
for installation on
T5 and T8 tubes

**HIGH LUMINOUS
EFFICIENCY**
Thanks to high efficiency
led and heatsink



THE UNIVERSAL EMERGENCY FIXTURE

SUITABLE TO BE INSTALLED
ON MOST COMMON LIGHTING FIXTURES

Beghelli

www.beghelli.com

BEGHELLI SpA - Via Mozzeghine, 13/15 - 40050 Montevoglio (BO) - Italy - Tel. +39 051 9660411 - Fax +39 051 9660444

Beghelli